

# Systems Collaboration

Positive Outcomes for  
Individuals with Dual Diagnosis

Ed Comer, M. Ed.



# This session will:

✓ Raise awareness of need

✓ Resolve systems issues

✓ Increase capacity to provide services at a local level to individuals with developmental disabilities and co-morbid mental illness

# State and Local models of collaboration will:

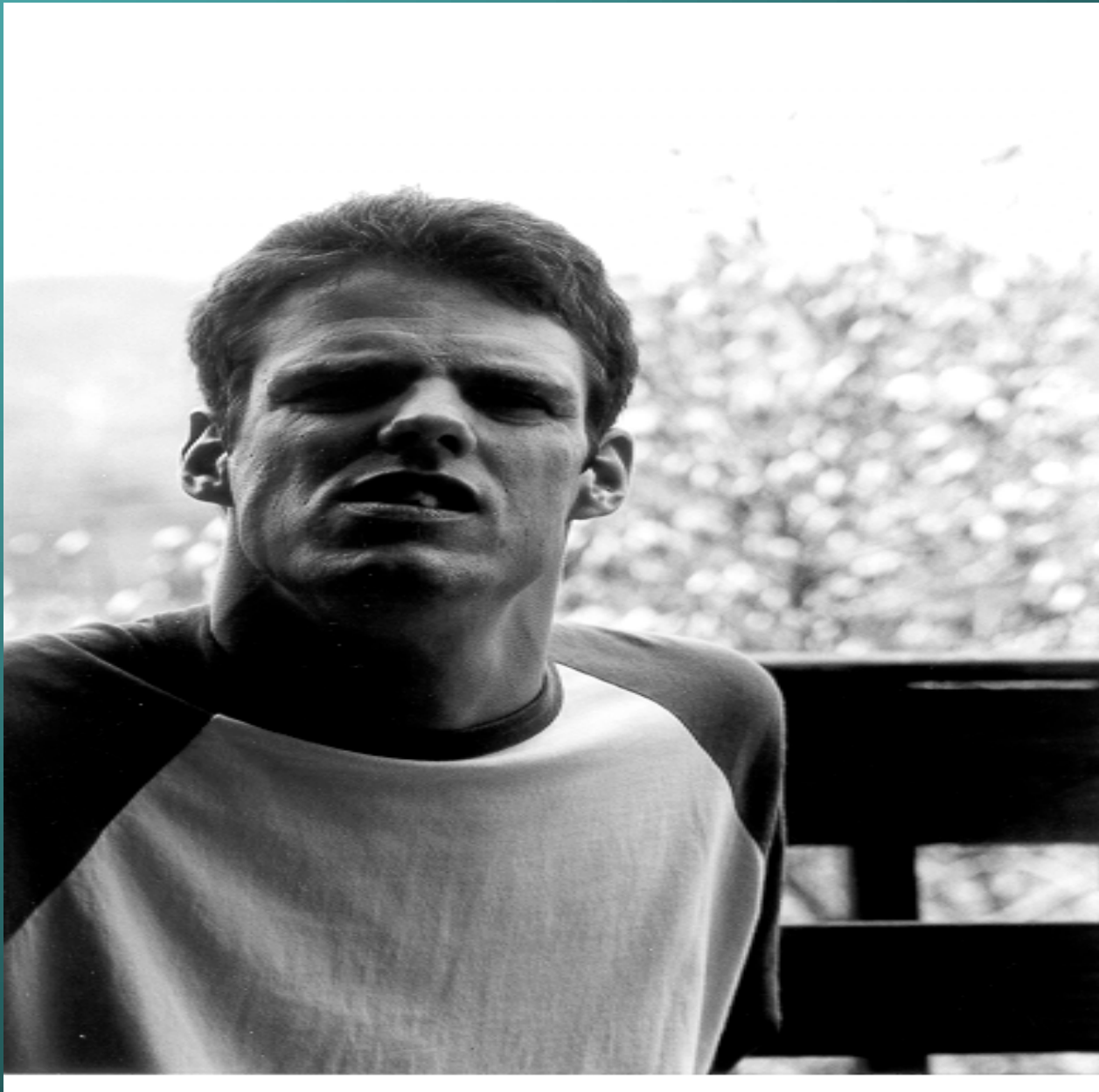
- ✓ Depict how to overcome misinformation, misperception and obstacles impeding care in the community systems

# Three Beliefs

*Systems aren't special, our clients are!*

*Just because I can't talk doesn't mean I have nothing to say!*

*Everyone knows what we can't do. We need to discuss what we can do!*



# Obstacles

Ability to punt the responsibility

Mission Focus

Tough Population

Eligibility criteria

Misperceptions

# Obstacles continued

Language differences

Funding issues

Residential options

Crisis Services

Workforce Issues

# History of Dual Diagnosis Collaboration

## February 2000

Directors Michael Hogan and Ken Ritchey convened a committee to make recommendations for the improvement of services to Ohioans served by both systems

## March 2008

Directors Sandra Stephenson and John Martin confirmed their continued commitment

# Outcomes

November 2000

*“Clinical Best Practices for Serving People with Developmental Disabilities and Mental Illness”*

report was accepted by the directors

Go to: [www.ohiomidd.org](http://www.ohiomidd.org)

# Outcomes continued:

## December 2002

ODMR/DD & ODMH signed an interagency agreement that strengthened the collaboration between the two departments

Go to: [www.ohiomidd.org](http://www.ohiomidd.org)

## January 2004

The Ohio MI/DD CCOE was initiated

# CCOE Partners



# Mission Statement

- ✓ Partners will plan, develop, and implement the activities of the CCOE to identify clinical best practices
- ✓ To train professionals in mental health, mental retardation/developmental disabilities and related service systems
- ✓ To provide systemic and clinical consultation across Ohio

# Education

- ✓ The CCOE will deliver a series of regional training programs on systemic and clinical best practices in dual diagnosis

# Community Development

✓ Representatives from each of Ohio's 88 counties will be asked to form teams that will have opportunities to receive training through the Ohio CCOE and receive on-going consultation around best practice recommendations for individuals with dual diagnosis

✓ The training and consultation is aimed at raising awareness of need, resolving issues, and increasing each teams' capacity to provide services through the collaborative efforts of local systems and agencies such as the county board of MRDD, county community mental health or ADAMH board, hospitals, schools, residential agencies, advocates, families, etc.

# Local Approaches

Top Down

Bottom Up

Establish DDIT

*Everyone knows what we can't do-  
begin to discuss what we can do!*

# Local Approaches continued

Pool Resources

Merge

Purchase

It's like making sausage

Take advantage of available help

# Assessment & Consultation

✓ Provide consultation to MRDD and Mental health boards in the state of Ohio regarding the treatment of people with dual diagnosis

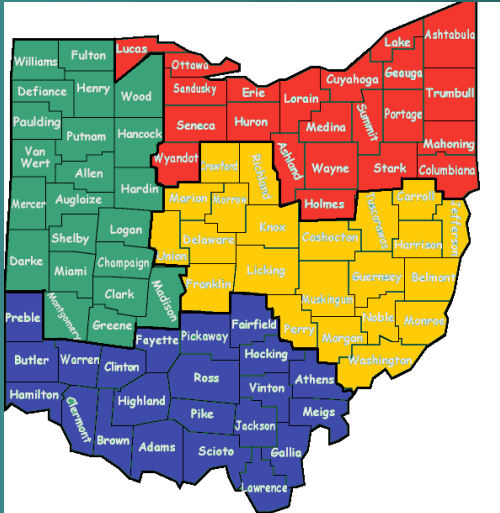
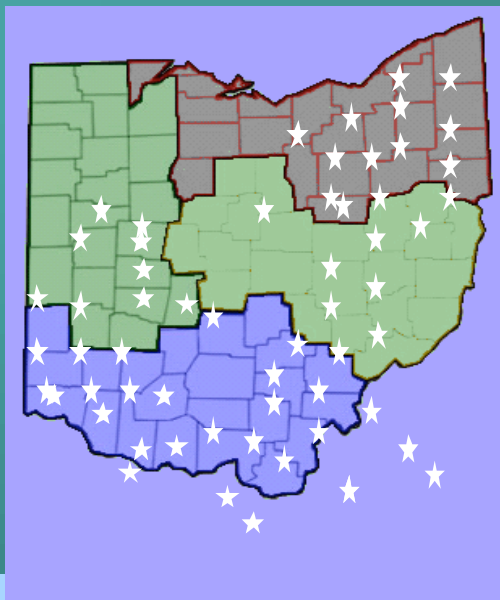
✓ A goal of this program is to assist administrators and programs with systems issues and to develop long term training systems for clinical care providers in the area of dual diagnosis

# Research

- ✓ To foster a spirit of curiosity and learning to produce new knowledge, which can be applied to educate the field and improve the lives of consumers

## CCOE FIVE-YEAR ACCOMPLISHMENTS

Community Development	Education	Assessment and Consultation	Research
<ul style="list-style-type: none"> <li>→ 38 Dual Diagnosis Intervention teams developed</li> <li>→ 70 counties covered by dual diagnosis intervention teams</li> <li>→ 15,000 inquiries on the CCOE website</li> <li>→ \$163,000 mini grants awarded to local communities</li> </ul>	<ul style="list-style-type: none"> <li>→ 9,877 education attendees</li> <li>→ 18,624 education contact hours</li> <li>→ 173 programs directly sponsored, co-sponsored, and/or with CCOE partners providing educational programming</li> </ul>	<ul style="list-style-type: none"> <li>→ 685 provided ongoing psychiatric care</li> <li>→ 44 new assessments annually</li> <li>→ 6 regional assessment backup clinics in the CCOE network</li> <li>*Community Advocacy Model (CAM)..... <i>Dayton</i></li> <li>*Cincinnati Children's Hospital Psychiatry Division ..... <i>Cincinnati</i></li> <li>*Nisonger Center..... <i>Columbus</i></li> <li>*Holzer Clinic... ..<i>Gallipolis</i></li> <li>*Blick Clinic... ..<i>Akron</i></li> <li>*Ascentia... ..<i>Cleveland</i></li> </ul>	<ul style="list-style-type: none"> <li>→ Community Living attitudes Scale (CLAS)</li> <li>→ Four Quadrant Model of Dual Diagnosis</li> <li>→ ODMH/CNS Medicaid Psychotropic Practice Project</li> <li>→ Test of Memory Malingering</li> </ul>



Central Region

Northern Region

**CAM:**  
 Allen/Auglaize/Hardin  
 Miami/Montgomery  
 Greene /Darke /Madison/  
 Clark/Champaign/Logan

**Holzer:**  
 Jackson/ Gallia/Meigs  
 Athens/Hocking/Vinton/  
 Pike  
**CAM:** Preble  
 Warren/Clinton  
**CCHMC:** Butler, Hamilton,  
 Clermont, Brown, Adams,  
 Highland

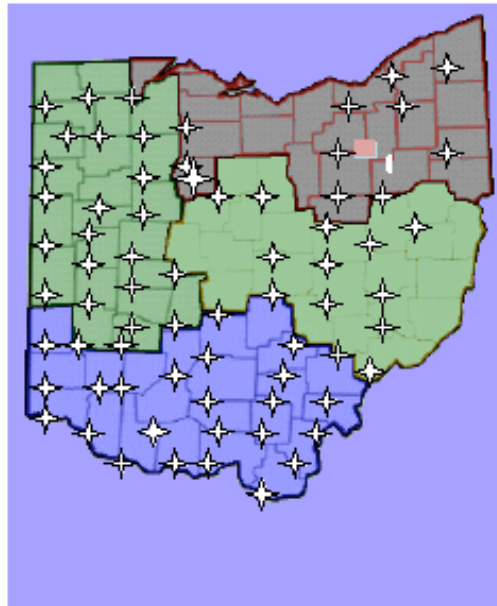
**Nisonger:**  
 Muskingum/Coshocton/  
 Guemsey/Noble/  
 Morgan/Perry/  
 Franklin/Richland  
 Carroll/Tuscarawas

**Ascentia:** Medina  
 Lorain/Wayne / Holmes  
 Geauga/Cuyahoga  
 Lake/Ashtabula

**Blick:** Portage/ Stark  
 Trumbull/Mahoning  
 Columbiana/Summit

11 Counties                      16 Counties                      10 Counties                      14 Counties

TOTAL = 51 counties



Western Region	Southern Region	Central Region	Northern Region
1.	10.	21.	29.
	11.		30.
2.	12.		31.
	13.	22.	32.
3.	14.	23.	33.
4.	15.	24.	34.
5.		25.	35.
	16.	26.	36.
6.	17.	27.	37.
7.		28.	38.
8.	18.		
9.	19.		
	20.		
9 Teams / 21 Counties	11 Teams / 21 Counties	8 Teams / 15 Counties	10 Teams / 13 Counties

# Examples of ongoing collaboration

Montgomery County

Mahoning County

Athens, Vinton, Hocking Counties

Hamilton County

Butler County

Union County

Allen, Auglaize, Hardin counties

# Examples continued

Carroll, Tuscarawas counties

Champaign, Logan counties

Warren, Clinton counties

Lake county

Knox/Licking counties

Lucas county

Seneca, Wyandot, Sandusky counties

Ed Comer

Director of Psychiatry Services  
and Program Administrator  
for the Ohio CCOE

[Edward.comer@wright.edu](mailto:Edward.comer@wright.edu)